

# **USER MANUAL**

## **INSTALLATION INSTRUCTIONS FOR**

### **EF FLANGE ADAPTOR**

**PERSONAL PROTECTIVE EQUIPMENTS ARE REQUIRED DURING THE INSTALLATION AND USE  
OF THIS SYSTEM**



## OTHER TOOLS/EQUIPMENTS NECESSARY DURING THE INSTALLATION



- Cleaning agent (eg. isopropyl alcohol, trichloroethane)
- Lint free towel/paper

## INSTALLATION STEPS



***Pic.1***

- 1- EF flange adaptor is measured in full length (Picture 1)



***Pic.2***

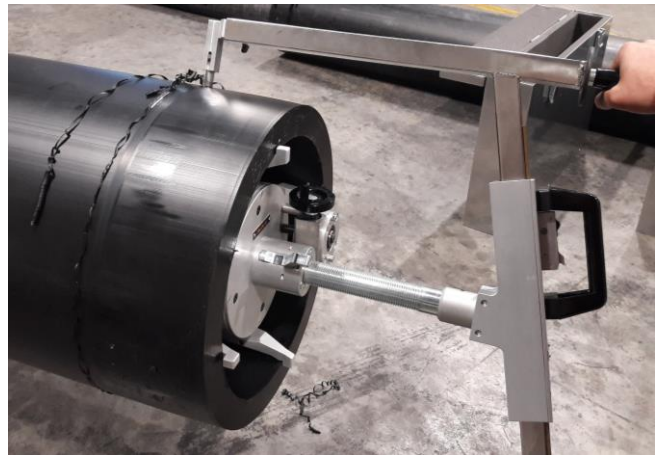


***Pic.3***

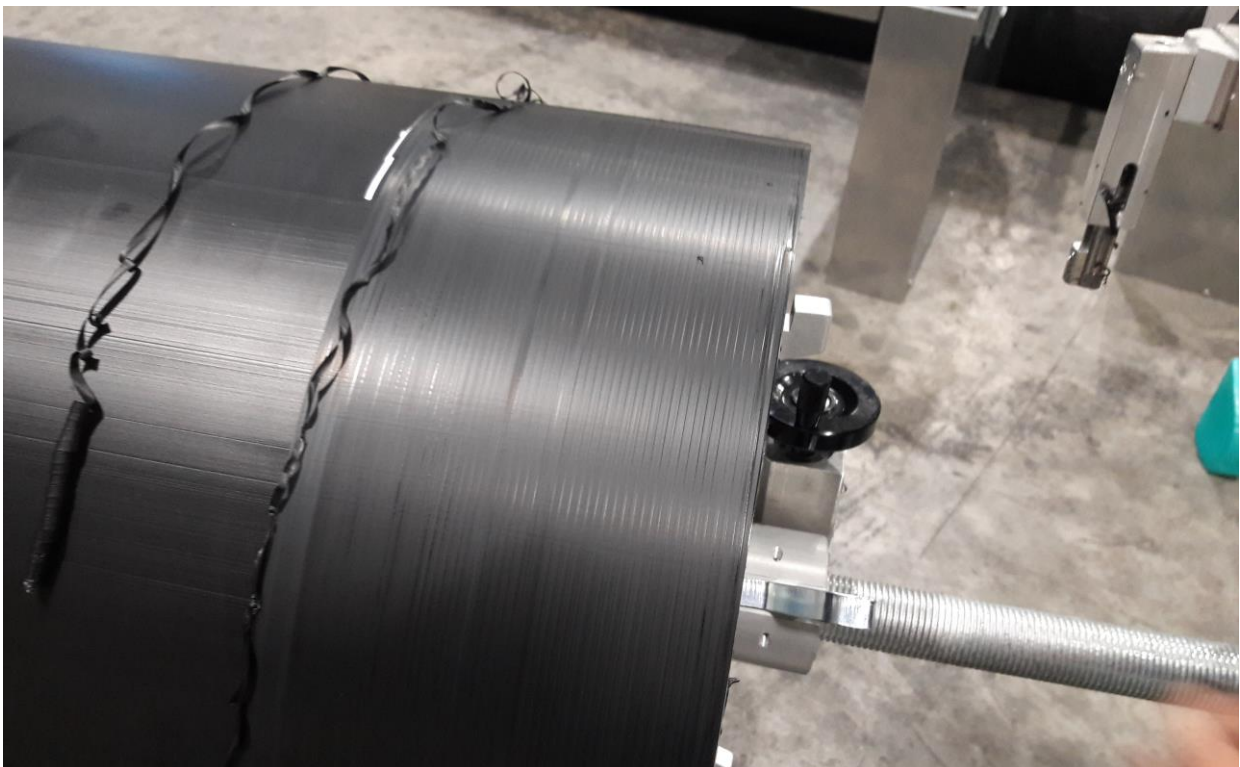
- 2- The linear measure is marked with a pen on pipe. (Picture 2 - 3)



**Pic.4**



**Pic-5**



**Pic-6**

**3- Pipe is scraped (Picture 4-5-6)**



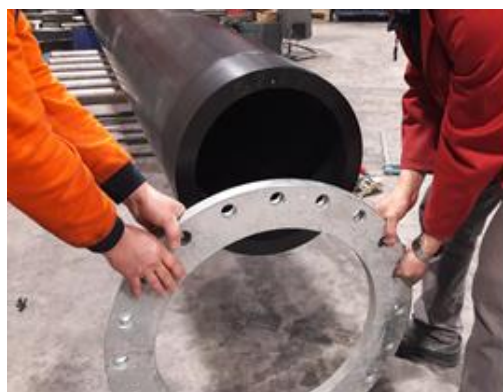


*Pic-7*



*Pic-8*

**4-** Pipe and EF flange adaptor is measured by a tape measure (Picture 7-8)



*Pic-9*



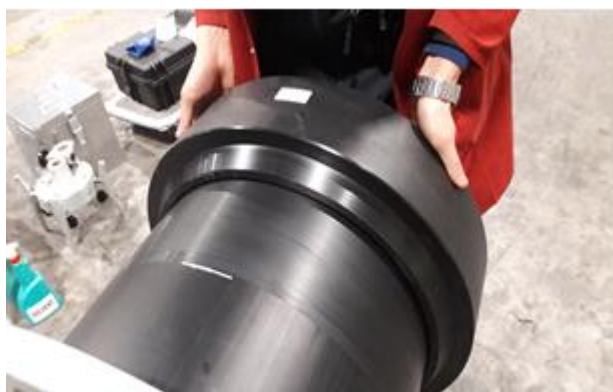
*Pic-10*

**5-** The flange is inserted to the pipe (Picture 9-10)



*Pic-11*

**6-** EF flange adaptor and pipe are cleaned with a proper isopropyl alcohol. (Picture-11)



*Pic-12*



*Pic-13*

- 7-** The EF flange adaptor is inserted to the pipe and the heads of pipe and EF flange adaptor are aligned. (Picture 12-13)



*Pic-14*



*Pic-15*



*Pic-16*

- 8-** To fix the EF flange adaptor, it is squeezed on the pipe by support of a chock. By means of chock, it is fixed by a dogwrench during the weld to not move. (Picture 14-15-16)





*Pic-17*

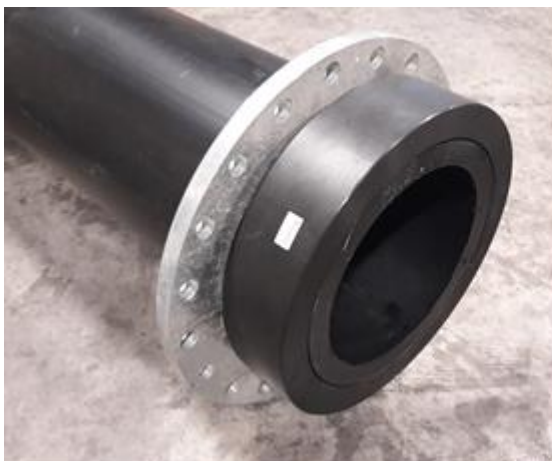


*Pic-18*



*Pic-19*

- 9-** To weld the flange adaptor, the grippers of EF welding cable are pulled to back and the welding wire is inserted into gripper then the grippers are released. The wires will be squeezed in the gripper. (Picture 17-18-19)



*Pic-20*



*Pic-21*

- 10-** After welding process, the welding wire is cut from shortest point on the product. The chocks, dogwrench and squeezing belt are removed over the pipe. The flange is placed on EF flange adaptor. (Picture 20-21)