

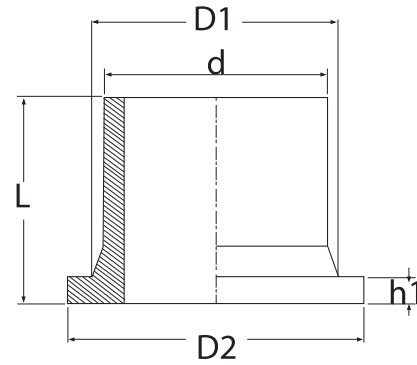
## FLANGE ADAPTOR (SHORT) / FLANŞ ADAPTÖR (KISA)

SDR17 PE100

GAS/GAZ : 6 BAR

WATER/SU : 10 BAR

TYPE/TİP : SPIGOT



d	CODE	Kg.	L (mm)	D1 (mm)	D2 (mm)	h1 (mm)	box sizes	nos/box
140	30.FAK.00.17.0140	0,95	134	150	188	26	60x40x45	12
160	30.FAK.00.17.0160	1,10	134	170	210	25	60x40x45	12
200	30.FAK.00.17.0200	2,20	142	225	268	32	60x40x45	6
355	30.FAK.00.17.0355	3,96	180	370	430	40	60x40x45	1
400	30.FAK.00.17.0400	5,89	191	425	482	46	60x40x45	1
450	30.FAK.00.17.0450	13,80	220	510	560	60	60x60x33	1
500	30.FAK.00.17.0500	16,85	210	525	585	60	*	
560	30.FAK.00.17.0560	21,90	240	610	685	60	*	
630	30.FAK.00.17.0630	23,50	220	640	685	60	*	
710	30.FAK.00.17.0710	32,00	230	730	800	60	*	
800	30.FAK.00.17.0800	34,60	230	840	905	60	*	
900	30.FAK.00.17.0900	46,20	270	940	1005	60	*	
1000	30.FAK.00.17.1000	53,00	290	1047	1110	60	*	
1200	30.FAK.00.17.1200	68,80	310	1245	1330	60	*	
1400	30.FAK.00.17.1400						*	
1600	30.FAK.00.17.1600						*	

(\*) No box is used. Only Euro pallets are being used.