

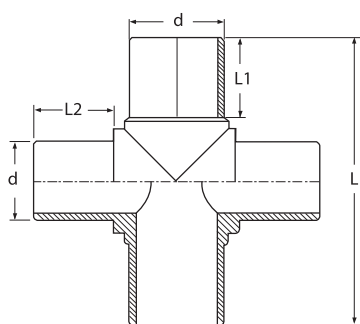
## CROSS TEE / KROS TE

SDR17 PE100

GAS/GAZ : 6 BAR

WATER/SU : 10 BAR

TYPE/TIP : SPIGOT



d	CODE	Kg.	L(mm)	L1(mm)	L2 (mm)	box sizes	nos/box
90	30.CT0.00.17.0090	1,50	305	85	90	60*40*45	12
110	30.CT0.00.17.0110	2,60	340	95	110	60*40*45	5
125	30.CT0.00.17.0125	3,10	360	100	90	60*40*45	5 *
140	30.CT0.00.17.0140	4,50	390	100	110	60*40*30	4 *
160	30.CT0.00.17.0140	5,80	420	105	140	60*40*30	2 *
180	30.CT0.00.17.0180	6,50	450	120	150	60*40*30	2 *
200	30.CT0.00.17.0200	12,00	520	125	130	60*40*30	2 *
225	30.CT0.00.17.0225	13,00	540	135	150	60*40*45	2 *
250	30.CT0.00.17.0250	20,00	560	120	145	60*40*45	1 *
280	30.CT0.00.17.0280	23,00	570	125	185	60*60*33	1 *
315	30.CT0.00.17.0315	28,00	650	130	165	**	*

(\*) Produced by EF saddle

(\*\*) No box is used. Only Euro pallets are being used.