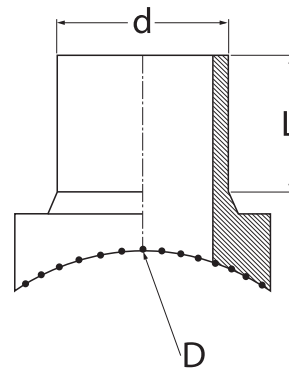


SDR17 ELECTROFUSION LARGE BRANCH SADDLES

Water - 160 PSI at 73 Deg F Sustainable Maximum Operating Pressure

Gas - 90 PSI at 73 Deg F Sustainable Maximum Operating Pressure

- Suitable for Water, Fluids & Slurry's
- Engineered for PE3408, PE4710 & PE100 HDPE Pipe Systems
- Manufactured in accordance with ASTM F-714, ASTM F-1055, ASTM D-2513, ASTM D-3035, ASTM D-3261, ASTM D-3350, AWWA C-901, AWWA C-906, DIN16963, EN1555, EN12201 ISO-9001 Certified



BASE (D)	BASE NORM	OUTLET (d)	OUTLET NORM	L	Unit Weight in lbs	Item Code
12"	IPS	10"	IPS	6.70	18.74	30.BS1.11.11.3227
14"	IPS	10"	IPS	6.70	18.74	30.BS1.11.11.3527
14"	IPS	12"	IPS	6.70	33.07	30.BS1.11.11.3532
16"	IPS	10"	IPS	6.70	18.74	30.BS1.11.11.4027
16"	IPS	12"	IPS	6.70	33.07	30.BS1.11.11.4032
18"	IPS	10"	IPS	6.70	18.74	30.BS1.11.11.4527
18"	IPS	12"	IPS	6.70	33.07	30.BS1.11.11.4532
18"	IPS	14"	IPS	6.70	33.07	30.BS1.11.11.4535
20"	IPS	10"	IPS	6.70	18.74	30.BS1.11.11.5027
20"	IPS	12"	IPS	6.70	33.07	30.BS1.11.11.5032
20"	IPS	14"	IPS	6.70	33.07	30.BS1.11.11.5035
20"	IPS	16"	IPS	8.46	92.60	30.BS1.11.11.5035
22"	IPS	10"	IPS	6.70	18.74	30.BS1.11.11.5527
22"	IPS	12"	IPS	6.70	33.07	30.BS1.11.11.5532
22"	IPS	14"	IPS	6.70	33.07	30.BS1.11.11.5535
22"	IPS	16"	IPS	8.46	92.60	30.BS1.11.11.5535
22"	IPS	16"	IPS	8.46	92.60	30.BS1.11.11.5540
22"	IPS	18"	IPS	8.46	92.60	30.BS1.11.11.5545
24"	IPS	10"	IPS	6.70	18.74	30.BS1.11.11.6027
24"	IPS	12"	IPS	6.70	33.07	30.BS1.11.11.6032

SDR17 Electrofusion Large Branch Saddles
Water - 160 PSI at 73 Deg F Sustainable Maximum Operating Pressure
Gas - 90 PSI at 73 Deg F Sustainable Maximum Operating Pressure



- Suitable for Water, Fluids & Slurry's
- Engineered for PE3408, PE4710 & PE100 HDPE Pipe Systems
- Manufactured in accordance with ASTM F-714, ASTM F-1055, ASTM D-2513, ASTM D-3035, ASTM D-3261, ASTM D-3350, AWWA C-901, AWWA C-906, DIN16963, EN1555, EN12201 ISO-9001 Certified

BASE (D)	BASE NORM	OUTLET (d)	OUTLET NORM	L	Unit Weight in lbs	Item Code
24"	IPS	14"	IPS	6.70	33.07	30.BS1.11.11.6035
24"	IPS	16"	IPS	8.46	92.60	30.BS1.11.11.6040
24"	IPS	18"	IPS	8.46	92.60	30.BS1.11.11.6045
30"	IPS	10"	IPS	6.70	18.74	30.BS1.11.11.7627
30"	IPS	12"	IPS	6.70	33.07	30.BS1.11.11.7632
30"	IPS	14"	IPS	6.70	33.07	30.BS1.11.11.7635
30"	IPS	16"	IPS	8.46	92.60	30.BS1.11.11.7640
30"	IPS	18"	IPS	8.46	92.60	30.BS1.11.11.7645
30"	IPS	20"	IPS	8.46	92.60	30.BS1.11.11.7650
32"	IPS	10"	IPS	6.70	18.74	30.BS1.11.11.8127
32"	IPS	12"	IPS	6.70	33.07	30.BS1.11.11.8132
32"	IPS	14"	IPS	6.70	33.07	30.BS1.11.11.8135
32"	IPS	16"	IPS	8.46	92.60	30.BS1.11.11.8140
32"	IPS	18"	IPS	8.46	92.60	30.BS1.11.11.8145
32"	IPS	20"	IPS	8.46	92.60	30.BS1.11.11.8150
36"	IPS	10"	IPS	6.70	18.74	30.BS1.11.11.9127
36"	IPS	12"	IPS	6.70	33.07	30.BS1.11.11.9132
36"	IPS	14"	IPS	6.70	33.07	30.BS1.11.11.9135
36"	IPS	16"	IPS	8.46	92.60	30.BS1.11.11.9140
36"	IPS	18"	IPS	8.46	92.60	30.BS1.11.11.9145
36"	IPS	20"	IPS	8.46	92.60	30.BS1.11.11.9150
42"	IPS	10"	IPS	6.70	18.74	30.BS1.11.11.10627
42"	IPS	12"	IPS	6.70	33.07	30.BS1.11.11.10632
42"	IPS	14"	IPS	6.70	33.07	30.BS1.11.11.10635
42"	IPS	16"	IPS	8.46	92.60	30.BS1.11.11.10640
42"	IPS	18"	IPS	8.46	92.60	30.BS1.11.11.10645
42"	IPS	20"	IPS	8.46	92.60	30.BS1.11.11.10650
48"	IPS	10"	IPS	6.70	18.74	30.BS1.11.11.12127
48"	IPS	12"	IPS	6.70	33.07	30.BS1.11.11.12132
48"	IPS	14"	IPS	6.70	33.07	30.BS1.11.11.12135
48"	IPS	16"	IPS	8.46	92.60	30.BS1.11.11.12140
48"	IPS	18"	IPS	8.46	92.60	30.BS1.11.11.12145
48"	IPS	20"	IPS	8.46	92.60	30.BS1.11.11.12150
54"	IPS	10"	IPS	6.70	18.74	30.BS1.11.11.13727
54"	IPS	12"	IPS	6.70	33.07	30.BS1.11.11.13732
54"	IPS	14"	IPS	6.70	33.07	30.BS1.11.11.13735
54"	IPS	16"	IPS	8.46	92.60	30.BS1.11.11.13740
54"	IPS	18"	IPS	8.46	92.60	30.BS1.11.11.13745
54"	IPS	20"	IPS	8.46	92.60	30.BS1.11.11.13750
63"	IPS	10"	IPS	6.70	18.74	30.BS1.11.11.16027
63"	IPS	12"	IPS	6.70	33.07	30.BS1.11.11.16032
63"	IPS	14"	IPS	6.70	33.07	30.BS1.11.11.16035
63"	IPS	16"	IPS	8.46	92.60	30.BS1.11.11.16040
63"	IPS	18"	IPS	8.46	92.60	30.BS1.11.11.16045
63"	IPS	20"	IPS	8.46	92.60	30.BS1.11.11.16050
12"	DIPS	10"	DIPS	6.70	18.74	30.BS1.22.11.3328
14"	DIPS	10"	DIPS	6.70	18.74	30.BS1.22.11.3828

EF METRIK
EF METRIC

EF INCH

SPIGOT
SPIGOT

VANA
VALVE

MAKINE VE APARAT
MACHINES & TOOL

MONTAJ
INSTALLATION

TEKNIK
TECHNICAL

SDR17 Electrofusion Large Branch Saddles

Water - 160 PSI at 73 Deg F Sustainable Maximum Operating Pressure

Gas - 90 PSI at 73 Deg F Sustainable Maximum

Operating Pressure

- Suitable for Water, Fluids & Slurry's
- Engineered for PE3408, PE4710 & PE100 HDPE Pipe Systems
- Manufactured in accordance with ASTM F-714, ASTM F-1055, ASTM D-2513, ASTM D-3035, ASTM D-3261, ASTM D-3350, AWWA C-901, AWWA C-906, DIN16963, EN1555, EN12201 ISO-9001 Certified

BASE (D)	BASE NORM	OUTLET (d)	OUTLET NORM	L	Unit Weight in lbs	Item Code
14"	DIPS	12"	DIPS	6.70	33.07	30.BS1.22.11.3833
16"	DIPS	10"	DIPS	6.70	18.74	30.BS1.22.11.4428
16"	DIPS	12"	DIPS	6.70	33.07	30.BS1.22.11.4433
18"	DIPS	10"	DIPS	6.70	18.74	30.BS1.22.11.4928
18"	DIPS	12"	DIPS	6.70	33.07	30.BS1.22.11.4933
20"	DIPS	10"	DIPS	6.70	18.74	30.BS1.22.11.5428
20"	DIPS	12"	DIPS	6.70	33.07	30.BS1.22.11.5433
20"	DIPS	14"	DIPS	8.46	92.60	30.BS1.11.11.5438
20"	DIPS	16"	DIPS	8.46	92.60	30.BS1.11.11.5444
24"	DIPS	10"	DIPS	6.70	18.74	30.BS1.22.11.6528
24"	DIPS	12"	DIPS	6.70	33.07	30.BS1.22.11.6533
24"	DIPS	14"	DIPS	8.46	92.60	30.BS1.11.11.6538
24"	DIPS	16"	DIPS	8.46	92.60	30.BS1.11.11.6544
24"	DIPS	18"	DIPS	8.46	92.60	30.BS1.11.11.6549
30"	DIPS	10"	DIPS	6.70	18.74	30.BS1.22.11.8128
30"	DIPS	12"	DIPS	6.70	33.07	30.BS1.22.11.8133
30"	DIPS	14"	DIPS	8.46	92.60	30.BS1.11.11.8138
30"	DIPS	16"	DIPS	8.46	92.60	30.BS1.11.11.8144
30"	DIPS	18"	DIPS	8.46	92.60	30.BS1.11.11.8149
36"	DIPS	10"	DIPS	6.70	18.74	30.BS1.22.11.9728
36"	DIPS	12"	DIPS	6.70	33.07	30.BS1.22.11.9733
36"	DIPS	14"	DIPS	8.46	92.60	30.BS1.11.11.9738
36"	DIPS	16"	DIPS	8.46	92.60	30.BS1.11.11.9744
36"	DIPS	18"	DIPS	8.46	92.60	30.BS1.11.11.9749
42"	DIPS	10"	DIPS	6.70	18.74	30.BS1.22.11.11328
42"	DIPS	12"	DIPS	6.70	33.07	30.BS1.22.11.11333
42"	DIPS	14"	DIPS	8.46	92.60	30.BS1.11.11.11338
42"	DIPS	16"	DIPS	8.46	92.60	30.BS1.11.11.11344
42"	DIPS	18"	DIPS	8.46	92.60	30.BS1.11.11.11349
48"	DIPS	10"	DIPS	6.70	18.74	30.BS1.22.11.12928
48"	DIPS	12"	DIPS	6.70	33.07	30.BS1.22.11.12933
48"	DIPS	14"	DIPS	8.46	92.60	30.BS1.11.11.12938
48"	DIPS	16"	DIPS	8.46	92.60	30.BS1.11.11.12944
48"	DIPS	18"	DIPS	8.46	92.60	30.BS1.11.11.12949