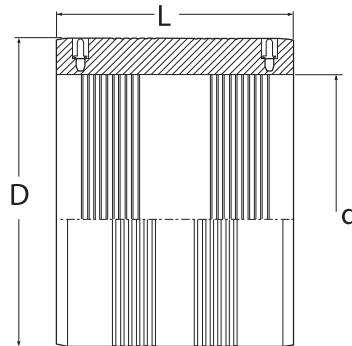


SDR26 ELECTROFUSION COUPLER DIPS

Water - 100 PSI at 73 Deg F Sustainable Maximum Operating Pressure

- Suitable for Water, Fluids & Slurry's
- Engineered for PE3408, PE4710 & PE100 HDPE Pipe Systems

- Manufactured in accordance with ASTM F-714, ASTM F-1055, ASTM D-2513, ASTM D-3035, ASTM D-3261, ASTM D-3350, AWWA C-901, AWWA C-906 DIN16963, EN1555, EN12201 ISO-9001 Certified



Nominal DIPS Pipe Size	ID (Nominal) d	D	L	Unit Weight in lbs.	Item Code
4"	4,800	5,30	3,94	0,55	30.MA1.22.27.0121
6"	6,900	7,67	6,30	1,87	30.MA1.22.27.0175
10"	11,100	12,20	6,50	4,50	30.MA1.22.27.0281
12"	13,200	14,75	7,08	8,30	30.MA1.22.27.0335
14"	15,300	17,10	8,66	13,80	30.MA1.22.27.0388
16"	17,400	19,25	8,66	16,20	30.MA1.22.27.0441
18"	19,500	21,50	8,66	20,60	30.MA1.22.27.0495
20"	21,600	24,20	9,84	29,20	30.MA1.22.27.0548
24" (1)	25,800	28,40	12,90	48,20	30.MA1.22.27.0655
30" (1)	32,000	35,40	13,70	75,50	30.MA1.22.27.0812
36" (1)	38,300	42,10	15,00	124,00	30.MA1.22.27.0972

(1) Separate fusion zones