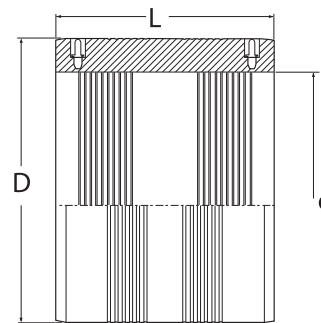


SDR17 ELECTROFUSION COUPLER, IPS DUAL RATED WATER/NATURAL GAS

Water - 160 PSI at 73 Deg F Sustainable Maximum Operating Pressure

Gas - 100 PSI at 73 Deg F Sustainable Maximum Operating Pressure

- Suitable for Water, Fluids & Slurry's
- Engineered for PE3408, PE4710 & PE100 HDPE Pipe Systems
- Manufactured in accordance with ASTM F-714, ASTM F-1055, ASTM D-2513 ASTM D-3035, ASTM D-3261, ASTM D-3350, AWWA C-901, AWWA C-906 DIN16963, EN1555, EN12201 ISO-9001 Certified



Nominal IPS Pipe Size	ID (Nominal) d	D	L	Unit Weight in lbs.	Item Code
6"	6,625	7,76	7,48	3,31	30.MA1.11.17.0169
7"	7,125	8,27	7,48	3,58	30.MA1.11.17.0180
8"	8,625	10,31	8,03	7,00	30.MA1.11.17.0219
10"	10,750	12,60	8,66	10,18	30.MA1.11.17.0273
12"	12,750	14,96	9,06	15,10	30.MA1.11.17.0323
14"	14,000	16,34	10,00	19,32	30.MA1.11.17.0355
16" (1)	16,000	18,50	11,81	27,78	30.MA1.11.17.0406
18" (1)	18,000	20,87	12,60	38,21	30.MA1.11.17.0457
20" (1)	20,000	23,23	14,41	54,75	30.MA1.11.17.0508
22" (1)	22,000	25,79	15,75	77,60	30.MA1.11.17.0558
24" (1)	24,000	27,95	15,75	88,05	30.MA1.11.17.0609
26" (1)	26,000	30,51	16,54	114,78	30.MA1.11.17.0660
28" (1)	28,000	33,07	17,52	147,71	30.MA1.11.17.0711
30" (1)	30,000	35,43	17,52	169,57	30.MA1.11.17.0762
32" (1)	32,000	37,20	18,50	181,46	30.MA1.11.17.0812
34" (1)	34,000	40,16	18,90	234,93	30.MA1.11.17.0863
36" (1)	36,000	41,73	19,69	238,80	30.MA1.11.17.0914
40" (1)	40,000	46,85	19,69	318,86	30.MA1.11.17.1016
42" (1)	42,000	49,21	19,69	352,58	30.MA1.11.17.1066
48" (1)	48,000	55,12	20,67	413,04	30.MA1.11.17.1219
54" (1)	54,000	62,20	21,65	562,07	30.MA1.11.17.1371

(1) Separate fusion zones