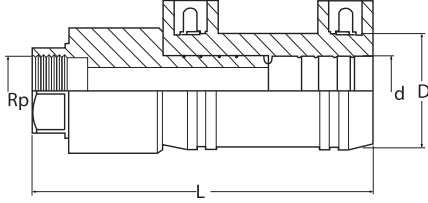
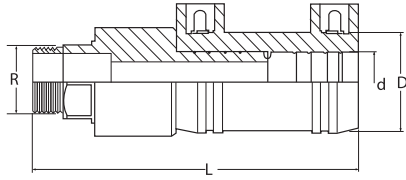


**PE-BRASS TRANSITION COUPLER (FEMALE) /
PE-PİRİNÇ GEÇİŞ MANŞONU (DİŞİ)**
TYPE / TİP: EF



d-Rp	CODE	Kg.	L(mm)	D (mm)	box sizes	nos/box
20-1/2"	32.MD1.00.11.2001	0,12	108	33	40*30*15	75
25-3/4"	32.MD1.00.11.2501	0,17	114	41	40*30*15	50
32 - 1"	32.MD1.00.11.3201	0,26	130	48	40*30*30	60
40 - 1 1/4"	32.MD1.00.11.4001	0,32	140	55	40*30*30	40
50 - 1 1/2"	32.MD1.00.11.5001	0,47	155	67	40*30*30	30
63 - 2"	32.MD1.00.11.6301	0,77	172	80	40*30*30	18

**PE-BRASS TRANSITION COUPLER (MALE) /
PE-PİRİNÇ GEÇİŞ MANŞONU (ERKEK)**
TYPE / TİP: EF



d-Rp	CODE	Kg.	L(mm)	D (mm)	box sizes	nos/box
20-1/2"	32.ME1.00.11.2001	0,14	122	33	40*30*15	75
20-3/4"	32.ME1.00.11.2002	0,14	122	33	40*30*15	75
25-3/4"	32.ME1.00.11.2501	0,19	128	41	40*30*15	50
32 - 1"	32.ME1.00.11.3201	0,32	150	48	40*30*30	60
32-3/4"	32.ME1.00.11.3202	0,32	150	48	40*30*30	60
32-1/2"	32.ME1.00.11.3203	0,32	150	48	40*30*30	60
40 - 1 1/4"	32.ME1.00.11.4001	0,44	160	55	40*30*30	40
50 - 1 1/2"	32.ME1.00.11.5001	0,56	175	67	40*30*30	30
63 - 2"	32.ME1.00.11.6301	0,75	200	80	40*30*30	18
75 - 2 1/2"	32.ME1.00.11.7501	2,48	195	97	40*30*30	16
90 - 3"	32.ME1.00.11.9001	1,85	225	115	60*40*30	15

* Steel